

## WHAT Membership application form

NAME: .....

ADDRESS: .....

.....

.....

E-MAIL: .....

DAYTIME PHONE: .....

MOBILE PHONE: .....

PLEASE TICK AS APPROPRIATE

I am over 18 years of age .....

I agree to abide by the constitution of the Waterford Healing Arts Trust (see [www.waterfordhealingarts.com](http://www.waterfordhealingarts.com)) .....

Please state your interest in the field of arts and / or health (optional).....

.....

.....

.....

.....

.....

.....

.....

.....

.....

.....

SIGNED: .....

DATE: .....



For more information, please contact:

**Waterford Healing Arts Trust**

WHAT Centre for Arts and Health

Waterford Regional Hospital

Dunmore Road, Waterford

Tel: 051 842664

E-mail: [WHAT@hse.ie](mailto:WHAT@hse.ie)

To find out news about the work of WHAT please visit

[www.waterfordhealingarts.com](http://www.waterfordhealingarts.com)

To find out news about arts and health nationally please visit

[www.artsandhealth.ie](http://www.artsandhealth.ie) and subscribe to its e-bulletin.

WHAT is a registered charity and our charity number is CHY13173.



Cover, main image: *Cramm Fuinseog* by Peadar Lamb in Emergency Dept. of Waterford Regional Hospital. Photo: Roland Paschhoff. Design: edit+

Become a Member  
of the  
Waterford Healing  
Arts Trust  
(WHAT)



## What is WHAT?

Based in the WHAT Centre for Arts and Health, the first of its kind in the country, we are one of Ireland's leading arts and health programmes and a support organisation for the field of arts and health nationally.

### WHAT aims

- to promote health and wellbeing through the arts
- to reduce anxiety and stress for patients, visitors, and staff through integrating art into healthcare environments
- to facilitate access to and participation in the arts
- to create professional opportunities for artists to produce new work and engage new audiences within healthcare and community contexts
- to forge closer relationships between Waterford Regional Hospital and the wider community through the arts
- to support the development of arts and health in the Republic of Ireland through training, information and advice

For further information on the work of WHAT, visit [www.waterfordhealingarts.com](http://www.waterfordhealingarts.com)



## Become a member

WHAT is inviting people with an interest in the fields of arts and / or health to have a say in its future development by becoming a member of the organisation.

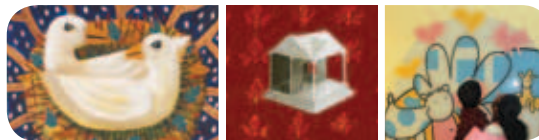
Members will bring new ideas and energy to WHAT. They will champion our aims and ethos and will be invited to help out in practical ways and through volunteering at fundraising and other events.

### Members' benefits

Members are invited to attend the WHAT Annual General Meeting and elect another member / be elected onto the WHAT Management Committee.

Members are also given:

- An introduction to the work of WHAT including a tour of the art collection
- An invitation to an annual lecture on arts and health exclusively for members
- Invitations to WHAT public events
- Borrowing rights for the WHAT arts and health library
- Invitations to Culture Vulture events (monthly arts outings in Waterford city. Participants must pay their own admission fees.)
- Information on arts and health nationally via [artsandhealth.ie](http://artsandhealth.ie) and quarterly e-bulletins
- 20% reduction on renting space in the WHAT Centre for Arts and Health
- 20% reduction on professional development and paid events



## How do I become a member?

Please complete the WHAT Membership application form overleaf, detach and return to the following address with your membership fee.

### Waterford Healing Arts Trust

WHAT Centre for Arts and Health  
Waterford Regional Hospital  
Dunmore Road  
Waterford

Members must be:

- Aged 18 years or over
- Agree to abide by the constitution of the Waterford Healing Arts Trust
- Have an interest in the field of arts and / or health

All membership applications will be presented to the committee of the Waterford Healing Arts Trust for approval.

WHAT Membership fee: €10 per annum  
Cheques should be made payable to the Waterford Healing Arts Trust.

For more information:  
Telephone 051 842664  
or e-mail [WHAT@hse.ie](mailto:WHAT@hse.ie)

